

5.9 A variety of typologies

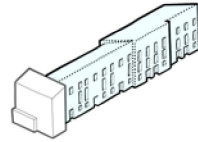
To achieve the key concept of creating a 21st century townscape, a rich variety of building typologies is essential.

This section discusses specific building typologies and explains the architectural rationale behind each of them and how they relate to their setting.

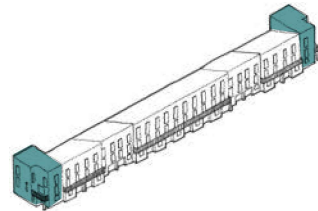
Buildings will vary in scale, materiality and detailing. Each building has its own characteristics, but share similar architectural principles.

The Building Typologies cross between the Detailed (A&C) and Outline components (B,D-G) of the Beam Park Phases A-G application. Therefore, some are covered in the Design Codes/Outline Design and Access Statement and others covered within the Detailed Design and Access Statement. To ensure consistency across the masterplan, typologies covered within the Detailed component should be considered design/material precedents for subsequent Reserved Matters Applications.

1

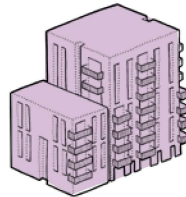


Houses - terrace



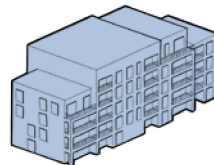
Houses- bookend

2



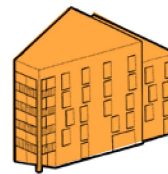
Warehouse

3



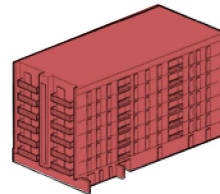
Cubic

4



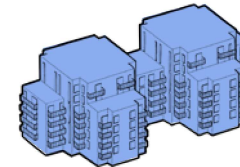
Rock

5



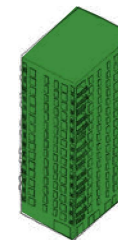
Villa

6



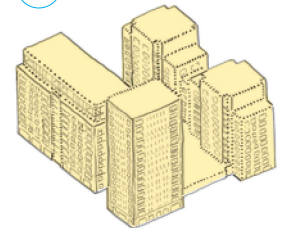
Mansion block

7



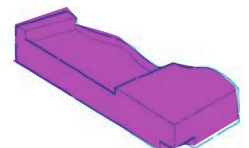
Point

8



Courtyard

9



School

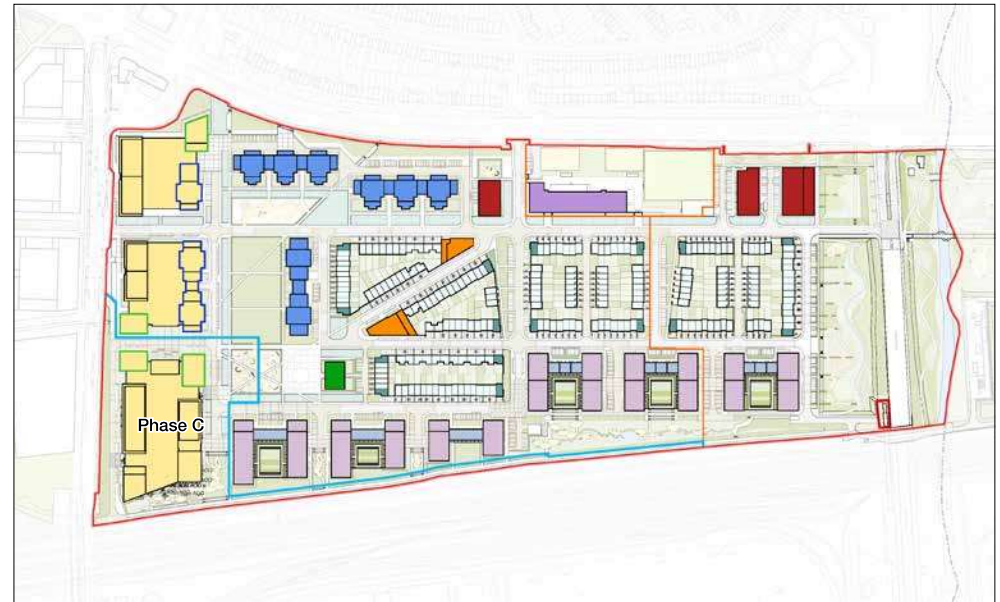


Figure 5.73: Illustrative plan of building typologies



Figure 5.78: Terrace typology



Figure 5.76: Bookend typology

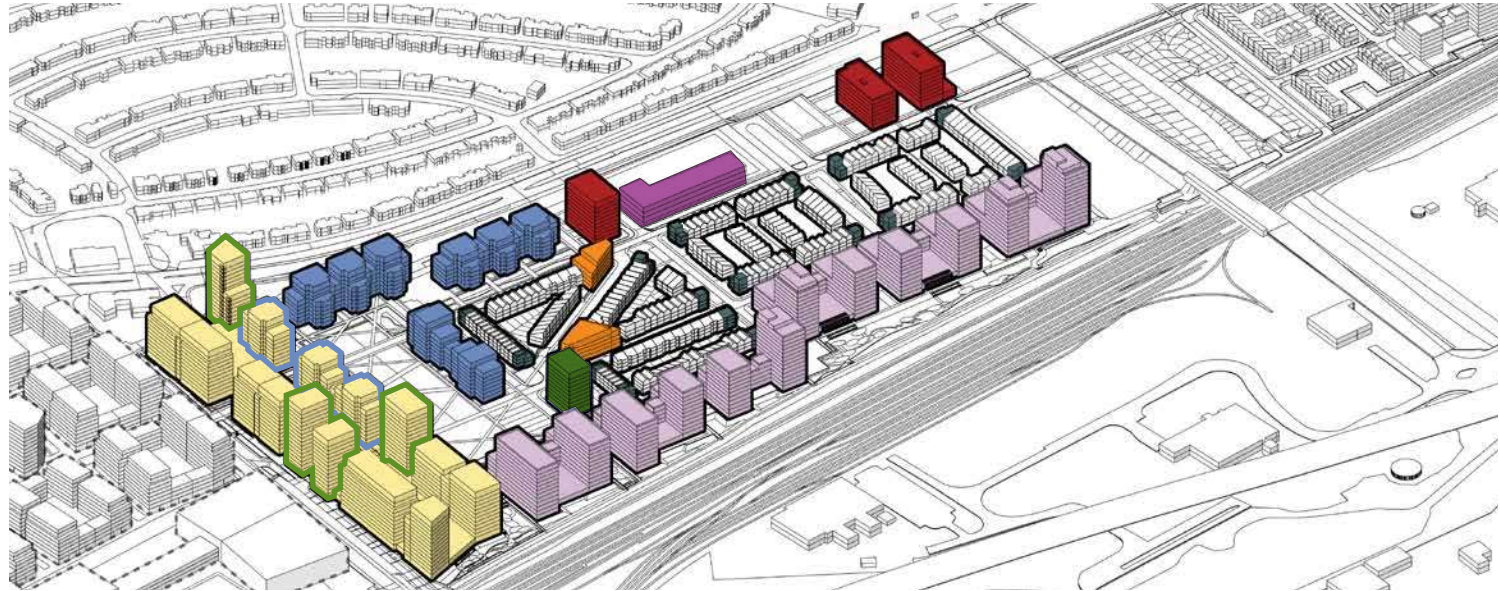


Figure 5.84: 3D view of typologies



Figure 5.79: Warehouse typology



Figure 5.81: Rock typology



Figure 5.77: Mansion block typology



Figure 5.80: Courtyard typology



Figure 5.75: Cubic typology



Figure 5.74: Villa typology



Figure 5.82: Point typology



Figure 5.83: School typology